



Town of Littleton School Committee

33 Shattuck St. * P.O. Box 1486 * Littleton, MA 01460-4486 *
Phone: (978) 540-2500 * Fax: (978) 486-9581 * Website: www.littletonps.org

MATTHEW HUNT, Vice Chair
BRAD AUSTIN, Member

MIKE FONTANELLA, Chair

TIMALYN RASSIAS, Secretary
JUSTIN MCCARTHY, Member

SCHOOL COMMITTEE MEETING

October 15, 2020

7:00 p.m.

Please click the link below to join the webinar:

<https://littletonma.zoom.us/j/95975885669?pwd=U0ZzMVl1THNVY2prTVl4d0dxZXRRZz09>

Passcode: 205598

Or iPhone one-tap :

US: +13126266799,,95975885669# or +19292056099,,95975885669#

Or Telephone:

Dial(for higher quality, dial a number based on your current location):

**US: +1 312 626 6799 or +1 929 205 6099 or +1 301 715 8592 or +1 346 248 7799 or +1 669 900 6833
or +1 253 215 8782**

Webinar ID: 959 7588 5669

International numbers available: <https://littletonma.zoom.us/j/auRKcW2LI>

**** *A G E N D A* * ***

Our mission is to foster a community of learners who strive for excellence and prepare each student to be a successful, contributing citizen in a global society.

7:00 I. ORGANIZATION

1. Call to Order

2. Consent Agenda

-Minutes – October 1, 2020

**-Oath to Bills -
and Payroll**

7:05 II. INTERESTED CITIZENS

7:10 III. RECOGNITION

1. National Merit Scholar Commended Students in the 2021 National Merit

Scholarship Program: *High School Principal Dr. John Harrington will recognize Littleton High School Seniors Katherine Asselin, Megan Delorenzo, Eleanor Hood, Simon Huynh, Alexandra Pavlov, Jerry Soong and Kaitlin Yandik, recipients of the 2021 National Merit Scholar award.*

It is the policy of the Littleton Public Schools not to discriminate on the basis of race, gender, religion, national origin, color, homelessness, sexual orientation, gender identity age or disability in its educational programs, services, activities or employment practices. Further information may be obtained by contacting Lyn Snow,, District Equity Coordinator at 978-540-2500, lsnow@littletonps.org or 33 Shattuck Street, P.O. Box 1486, Littleton, MA 01460.

Our mission is to foster a community of learners who strive for excellence and prepare each student to be a successful, contributing citizen in a global society.

7:15 IV. OLD BUSINESS

1. **Most recent updated 2020-2021 Calendar:** *Superintendent Kelly Clenchy and Director of Curriculum Elizabeth Steele will request approval on the most recent updated 2020-2021 School Calendar.*

7:20 V. NEW BUSINESS

1. **MOA with the LEA:** *Chair, Mike Fontanella will give an update on the MOA with the LEA.*
2. **Enrollment:** *Chair, Mike Fontanella and Superintendent Kelly Clenchy will discuss the Enrollment numbers and the percentage of remote and hybrid students in each school for the 2020-2021 as of October 1, 2020.*

7:30 VI. PRESENTATION

1. **Public Health Metrics:** *Chair, Mike Fontanella will give an update to the Public Health Metrics.*

7:35 VII. INTERESTED CITIZENS

7:40 VIII. SUBCOMMITTEE REPORTS

1. **PMBC**
2. **Budget Subcommittee**
3. **Policy Subcommittee: (see LPS website to view all policies)**
<http://www.littletonps.org/school-committee/school-committee-polices>

7:45 IX. ADJOURNMENT/EXECUTIVE SESSION

Motion to move into Executive Session for the purpose of contract negotiations with no intention to return to Open Session.

**NEXT SCHOOL COMMITTEE MEETING
(To be posted)**

It is the policy of the Littleton Public Schools not to discriminate on the basis of race, gender, religion, national origin, color, homelessness, sexual orientation, gender identity age or disability in its educational programs, services, activities or employment practices. Further information may be obtained by contacting Lyn Snow,, District Equity Coordinator at 978-540-2500, lsnow@littletonps.org or 33 Shattuck Street, P.O. Box 1486, Littleton, MA 01460.

Our mission is to foster a community of learners who strive for excellence and prepare each student to be a successful, contributing citizen in a global society.



Town of Littleton School Committee

33 Shattuck St. * P.O. Box 1486 * Littleton, MA 01460-4486 * Phone: (978) 540-2500 * Fax: (978) 486-9581 * Website: www.littletonps.org

MATTHEW HUNT, Vice Chair
BRAD AUSTIN, Member

MICHAEL FONTANELLA, Chair

TIMALYN RASSIAS, Secretary
JUSTIN MCCARTHY, Member

SCHOOL COMMITTEE MINUTES October 1, 2020 7:00 PM

PRESENT: Mike Fontanella
Matthew Hunt
Brad Austin
Justin McCarthy

ALSO PRESENT: Kelly Clenchy
Steve Mark
Dorothy Mulone
Bettina Corrow

NOT PRESENT: Timalyn Rassias

CALL TO ORDER

Mike Fontanella called the meeting to order at 7:00p.m.

On a motion by Matthew Hunt, and seconded by Justin McCarthy, it was voted to approve the Sept. 24, 2020 consent agenda as presented. (AYE: Unanimous). Motion carried. Roll Call Vote: Matthew Hunt, AYE; Brad Austin, AYE; Justin McCarthy, AYE; and Mike Fontanella, AYE.

INTERESTED CITIZENS

None

NEW BUSINESS

- 1. MOA with the LEA** – Chair, Mike Fontanella gave a brief update on the MOA with the LEA. We are close to an agreement. One of the items on the agenda requires some information from a third-party vendor related to HVAC, whom we are still waiting on. But we have made progress at this point.
- 2. Protocols regarding Social Gatherings by students:** Superintendent Clenchy gave a brief update on protocols regarding social gatherings by students. The joint press release that was sent out on Sept. 15, 2020 from Littleton Police Department and the Superintendent's office was included in the packet. The Superintendent mentioned that a social gathering took place within the community last weekend. Students from the High School attended but fortunately the school has been notified of the students and the

It is the policy of the Littleton Public Schools not to discriminate on the basis of race, gender, religion, national origin, color, homelessness, sexual orientation, gender identity, age or disability in its educational programs, services, activities or employment practices. Further information may be obtained by contacting Lyn Snow, District Equity Coordinator at 978-540-2500, lsnow@littletonps.org or 33 Shattuck Street, P.O. Box 1486, Littleton, MA 01460.

Our mission is to foster a community of learners who strive for excellence and prepare each student to be a successful, contributing citizen in a global society.

individuals have been asked to self-quarantine for 14 days. They will participate in school remotely and not take part in any extracurricular activities.

The Superintendent urged the community and our students to take this virus seriously so we will not be faced with any closure of any of our schools.

Mike Fontanella thanked the Littleton Police department for their work. It took them several hours to track down the students who attended the gathering and obtain the names of the students and make sure the students were safe and got home safely.

The Superintendent and the Public Health department worked together to determine what the appropriate response would be to keep our students and staff safe and we were able to restrict the students, who participated in the gathering and avoided having a much larger impact on the school community.

He reminded parents to keep an eye on their children and their extracurricular activities. It is important that parents ensure and help their children make the right choices in these situations. He is hoping this will be the last time we have to discuss this type of event at this forum.

PRESENTATION:

1. Public Health Metrics: Chair Mike Fontanella updated the community on public health metrics for Covid-19. The report is also posted on the District website.

Littleton is classified as yellow but border communities are still in the green. If a community is in red, sports team will not be playing that town until they move out of the red status

DESE Thresholds Average Cases Per Day per 100,000

- 4 Cases Per Day: **GREEN**
- Between 4 and 8 Cases Per Day: **YELLOW**
- 8 Cases Per Day: **RED**

The Superintendent ensured that we continue to monitor both soft and hard metrics. Best defense is to be wearing a mask and washing hands. Our absences have been low within the schools and we have no positive cases at this point.

Brad Austin – this data presents the last two weeks while schools have been opened. It is encouraging to see that we do not have a spike with the school since we reopened.

INTERESTED CITIZENS

None.

SUB-COMMITTEE

SEPAC – Brad Austin and Lyn Snow are re-organizing the SEPAC organization. The first meeting is scheduled for Tuesday, Oct. 13th. Emails will be going out to the community. It is encouraged to attend this meeting as there will be voting for the board positions.

Lyn Snow gave a brief update on Special Education. IEP services are being delivered. Staff has been very creative, and staff are really thinking “out of the box”. We are seeing more challenges this school year but the 10 planning days before school started has helped us get on the right track. There is more work to be done but we are having students in front of us and that is critical. She reminded everyone to remember to take care of themselves as well. Selfcare is crucial at this time.

Budget – Mike Fontanella mentioned that the budget process will be starting.

Policy – No updates currently.

85
86
87
88
89
90
91
92
93
94
95
96
97

ADJOURNMENT

On a motion Justin McCarthy by and seconded by Matthew Hunt, it was voted to adjourn at 7:36PM. Roll
Call Vote: Matthew Hunt, AYE; Brad Austin, AYE; Justin McCarthy, AYE; and Mike Fontanella, AYE.

NEXT MEETING DATE
School Committee
October 8, 2020
7:00PM
Zoom Meeting

DOCUMENTS AS PART OF MEETING

Release – Large gatherings
Public Health Metrics for Covid-19

October, 2020

LITTLETON HIGH SCHOOL ANNOUNCES
NATIONAL MERIT SCHOLAR COMMENDED STUDENTS IN THE
2021 NATIONAL MERIT SCHOLARSHIP PROGRAM

John Harrington, Ed.D., Principal of Littleton High School, announced today that seniors, Katherine Asselin, Megan Delorenzo, Eleanor Hood, Simon Huynh, Alexandra Pavlov, Jerry Soong and Kaitlin Yandik, were named as **Commended Students** in the 2021 National Merit Scholarship Program.

Commended Students throughout the country are recognized for their outstanding performance on the Preliminary SAT/National Merit Scholarship qualifying Test (PSAT/NMSQT) and their exceptional academic promise. Littleton High School's Commended Students placed among the top five percent of more than 1.5 million students who took the PSAT.

"The young men and women being named Commended students have demonstrated outstanding potential for academic success," commented a National Merit Scholarship Corporation spokesperson. "We hope this recognition will help broaden their educational opportunities and encourage them as they continue their pursuit of academic success."

Littleton Public Schools

2020-2021 School Calendar

Approved by: SC 08/06/20

SEPTEMBER (10)				
M	Tu	W	Th	F
	*1	*2	*3	*4
7	*8	*9	*10	*11
*14	*15	**16	17	18
21	22	23	24	25
28	29	30		

*Staff/PD **Start of School

OCTOBER (20)				
M	Tu	W	Th	F
			1	2
5	6	7A	8	9
12	13	14	15	16
19	20	21A	22	*23
26	27	28	29	30

*Staff /PD

NOVEMBER (17)				
M	Tu	W	Th	F
2	*3	4 _{MSC}	5 _{MSC}	6
9	10	11	12 _{EC/MS}	13
16	17 _{EC}	18A	19 _{EC}	20
23	24	25A	26	27
30				

*Staff PD / Election Day

DECEMBER (17)				
---------------	--	--	--	--

M	Tu	W	Th	F
	1	2A	3	4
7	8	9	10	11A
14	15	16	17	18
21	22	23	24	25
28	29	30	31	

JANUARY (19)				
--------------	--	--	--	--

M	Tu	W	Th	F
				1
4	5	6	7	8
11	12	13A	14	15
18	19	20	21	22
25	26	27A	28	29

FEBRUARY (15)				
---------------	--	--	--	--

M	Tu	W	Th	F
1	2	3	4	5
8	9	10A	11	12
15	16	17	18	19
22	23	24	25	26

MARCH (23)				
------------	--	--	--	--

M	Tu	W	Th	F
1	2	3A	4	5
8	9	10	11	12
15	16	17 _{EC}	18	19
22	23	24 _{EC/MS}	25 _{EC/MS}	26
29	30	31		

APRIL (16)				
------------	--	--	--	--

M	Tu	W	Th	F
			1	2
5	6	7	8	9
12	13	14A	15	16
19	20	21	22	23
26	27	28	29	30

MAY (20)				
----------	--	--	--	--

M	Tu	W	Th	F
3	4	5A	6	7
10	11	12	13	14
17	18	19	20 _{P/K}	21
24	25 _K	26	27 _{P/K}	28A
31				

JUNE (13)				
-----------	--	--	--	--

M	Tu	W	Th	F
	1	2	3	4
7	8	9	10	11
14	15	16	***17A	18
21	22	23	24	25
28	29	30		

***Tentative Last Day of School

School Starts: September 16, 2020
 Student Days Scheduled 175 days –
June 24, 2021 Any unused “snow days” will be used to adjust the School Calendar to the State requirement of 170 days. If no days are lost due to weather or for other reasons, students could be dismissed as early as **June 17, 2021**. When determined; the last day of school will be a 3-hr. Early Release.

KEY

- A** = All District PreK-12 – 3 hr. Early Release
- P/K** = Pre-School & Kindergarten conf.
- EC** = K-5 Elementary Conferences/ 3 hr. Early Release
- MSC** = MS Conferences 3 hr. Early Release
- ()** = School Days Per Month
- BACK TO SCHOOL NIGHTS AND/OR Evening Conferences**
- Yellow Box** = All Schools Closed

LITTLETON PUBLIC SCHOOLS

2020-2021 School Calendar

STARTING DATES

September 1 *Teachers return
September 16 **Start of School

NO SCHOOL – HOLIDAYS/VACATION DAYS/

PROFESSIONAL DEVELOPMENT

September 7 Labor Day
 September 28 Yom Kippur
 October 12 Columbus Day
 October 23 Professional Development
 November 3 Professional Development/Election Day
 November 11 Veteran's Day
 Nov. 26 – 27 Thanksgiving Break
 Dec. 24 – Jan. 1 Holiday Break
 January 18 Martin L. King Day
 February 15 -19 Winter Break
 April 2 Good Friday
 April 19-23 Spring Break
 May 31 Memorial Day

BACK TO SCHOOL CURRICULUM NIGHTS

Thursday, Oct. 1 HS Back to School Night
 Tuesday, Oct. 6 RS Back to School Night
 Thursday, Oct. 8 MS Back to School Night
 Tuesday, Oct. 13 SL Grade 1, 2 Back to School Night
 Wednesday, Oct. 14 SL K & Transitional Back to School Night

EARLY RELEASE – ALL SCHOOLS (Wednesdays/Fridays/last day)

October 7 Professional Development
 October 21 Professional Development
 November 18 Professional Development
November 25 Thanksgiving Break
 December 2 Professional Development
December 11 (Fri.) Professional Development
 January 13 Professional Development
 January 27 Professional Development
 February 10 Professional Development
 March 3 Professional Development
 April 14 Professional Development
 May 5 Professional Development
May 28 (Friday) Professional Development
June 17 (Thursday) Tentative Last Day of School

EARLY RELEASE – PARENT CONFERENCES

Wednesday, Nov. 4 Middle School Conference
 Thursday, Nov. 5 Middle School Conference
 Thursday, Nov. 12 Middle School Conference
 Thursday, Nov. 12 K-5 Elementary Conference
 Tuesday, Nov. 17 K-5 Elementary Conference
 Thursday, Nov. 19 K-5 Elementary Conference
 Wednesday, March 17 K-5 Elementary Conference
 Wednesday, March 24 K-5 Elementary Conference
 Wednesday, March 24 Middle School Conference
 Thursday, March 25 K-5 Elementary Conference
 Thursday, March 25 Middle School Conference
 Thursday, May 20 Pre-School & Kindergarten Conf.
 Tuesday, May 25 Kindergarten Conference
 Thursday, May 27 Pre-School & Kindergarten Conf.

EVENING PARENT CONFERENCES

Tuesday, Oct. 27 High School Evening Conference
 Thursday, Nov. 5 Middle School Evening Conference
 Tuesday, Nov. 17 3-5 Elementary Evening Conference
 Thursday, Nov. 19 K-2 Elementary Evening Conference
 Wednesday, March 10 High School Evening Conference
 Wednesday, March 17 T-2 Elementary Evening Conference
 Wednesday, March 24 3-5 Elementary Evening Conference
 Thursday, March 25 Middle School Evening Conference
 Thursday, May 27 Pre-School & Kindergarten Evening Conf.

STARTING & DISMISSAL SCHEDULE

School	Start	Dismissal	Early Dismissal
High School	7:25AM	1:56PM	10:55AM
Middle School	7:20AM	1:45PM	10:45AM
Russell Street	8:05AM	2:30PM	11:30AM
Shaker Lane	8:50AM	3:15PM	12:15PM
Full-Day PreK	9:00AM	2:45PM	11:30AM
AM PreK	9:00AM	11:30AM	
PM PreK	12:15PM	2:45PM	

SCHOOL CLOSING / DELAY ANNOUNCEMENTS

Web: Littletonps.org Radio: WBZ (1030), WCAP (980), WRKO (680)
 TV: WBZ (4), WCBV (5), WHDH (7), and cable channel 3
 Twitter: Kelly Clenchy @kbstcl

High School Graduation Date – June 4, 2021



Gr. 8 Promotion Ceremony – TBD



Tigers' Den will close at 4:00pm on 11/25/20 and the last day of school.

MAJOR RELIGIOUS & CULTURAL HOLIDAYS & HOLY DAYS

Sept. 18 – Sept. 20 Rosh Hashanah
 September 28 Yom Kippur
 November 14 Diwali begins
 December 10-18 Chanukah
 December 25 Christmas
 December 26 Kwanza
 March 27 Passover
 April 2 Good Friday
 April 4 Easter Sunday

MARKING PERIODS

Preschool & Kindergarten
 January 22, June 17

Transitional – Grade 5 Marking Period Ends:
 December 11, March 19, June 17

Middle School Marking Period Ends:
 December 11, March 19, June 17

High School Marking Period Ends:
 November 20, January 29, April 9, June 17

LITTLETON PUBLIC SCHOOLS						
ENROLLMENT AS OF SEPTEMBER 16, 2020						
YEAR END ENROLLMENT						
		# Students	#Students	#Students Enrolled		
SCHOOL	GRADE	Littleton Residents	School Choice	TotalSept. 16, 2020		
SHAKER LANE	PreK	38	0	38		
	K/T	97	5	102		
	1	115	3	118		
	2	102	6	108		
	SL Total	352	14	366		
RUSSELL STREET	3	129	5	134		
	4	108	4	112		
	5	122	5	127		
	RS Total	359	14	373		
MIDDLE SCHOOL	6	125	11	136		
	7	126	4	130		
	8	119	10	129		
	MS Total	370	25	395		
HIGH SCHOOL	9	112	6	118		
	10	103	6	109		
	11	87	12	99		
	12	101	7	108		
	HS Total	403	31	434		
	Total ALL	1484	84	1568		
Total #Students Littleton Residents		1484				
Total #Students School Choice		84				
Total Students Enrolled		1568				
Total Students Attending Out of District Placements			29			
Total # of Students in Voc.Tech prog. @ HS			4			
Estimated # of current Resident Homeschool	8					
<u>COVID HOMESCHOOL</u>						
SL Homeschool	12					
RSS Homeschool	8					
MS Homeschool	4					
HS Homeschool	1					
Total Additional Homeschool due to COVID	25					
<u>Estimated Breakdown on loss of Student Enrollment</u>						
30 Less Pre-K students	30					
3 Less SC Students (8SC 12th graders graduated)	3					
12 Left to Private Schools	12					
9 Left to Parker Charter School	9					
12 Left to Nashoba Tech.	12					
2 Left to Virtual	2					
7 Left to Public (a few to parents teaching jobs @ their school)	7					
8 moved out of the district	8					
25 Homeschool (additional since COVID)	25					
Total est. breakdown to justify enrollment loss since April 2020	108					
Total number of Students on April 1, 2020	1671					
Total number of Students on September 16, 2020 (first day)	1568					
Total number of student less since April 2020	-103					
Total number of 12th grade graduated June 2020	118					
Total number of 12th grade 1st day 2020	108					

Hybrid vs. Remote by School
2020 - 2021

	<u>Hybrid</u>	<u>Remote</u>	<u>Full in 4 Days</u>	<u>Student Total</u>
HIGH SCHOOL	340 (78%)	82 (19%)	15 (3%)	437
MIDDLE SCHOOL	<u>Hybrid</u>	<u>Remote</u>	<u>Full in 4 Days</u>	
	253 (64%)	116 (30%)	24 (6%)	393
RUSSEL STREET	<u>Hybrid</u>	<u>Remote</u>	<u>Full in 4 Days</u>	
	227 (61%)	126 (34%)	20 (5%)	373
SHAKER LANE	<u>Hybrid</u>	<u>Remote</u>	<u>Full in 4 Days</u>	
	249 (68%)	111 (31%)	6 (<1%) Gr 1 & 2 Hybrid	366
			106 (29%) PK, K, & T	

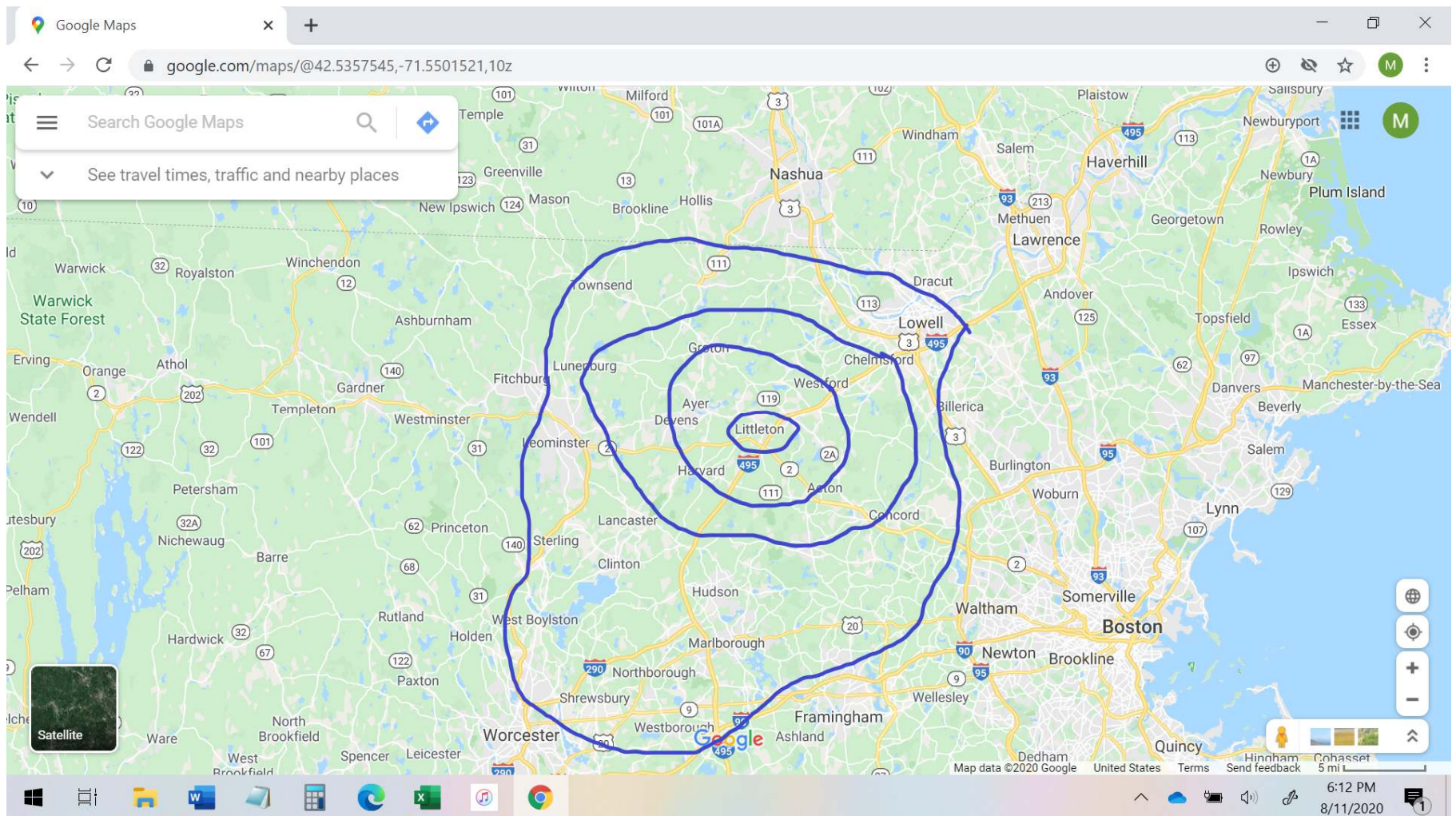
Covid-19 Health Metrics

Littleton and Surrounding
Communities

Town Groupings Evaluated

- **Littleton**
- **Border Communities**
 - Littleton, plus Acton, Ayer, Boxborough, Groton, Harvard, and Westford
- **Contiguous Communities**
 - Border Communities, plus Bolton, Carlisle, Chelmsford, Concord, Dunstable, Lancaster, Lunenburg, Maynard, Pepperell, Shirley, Stow
- **495 Belt**
 - Contiguous Communities, plus Ashby, Bedford, Berlin, Boylston, Clinton, Hudson, Leominster, Lincoln, Lowell, Marlborough, Northborough, Shrewsbury, Southborough, Sterling, Sudbury, Townsend, Tyngsboro, Wayland, West Boylston, Westborough, Weston
- **Middlesex County**
- **Commonwealth of Massachusetts**

Town Groupings Evaluated



Average Daily Cases

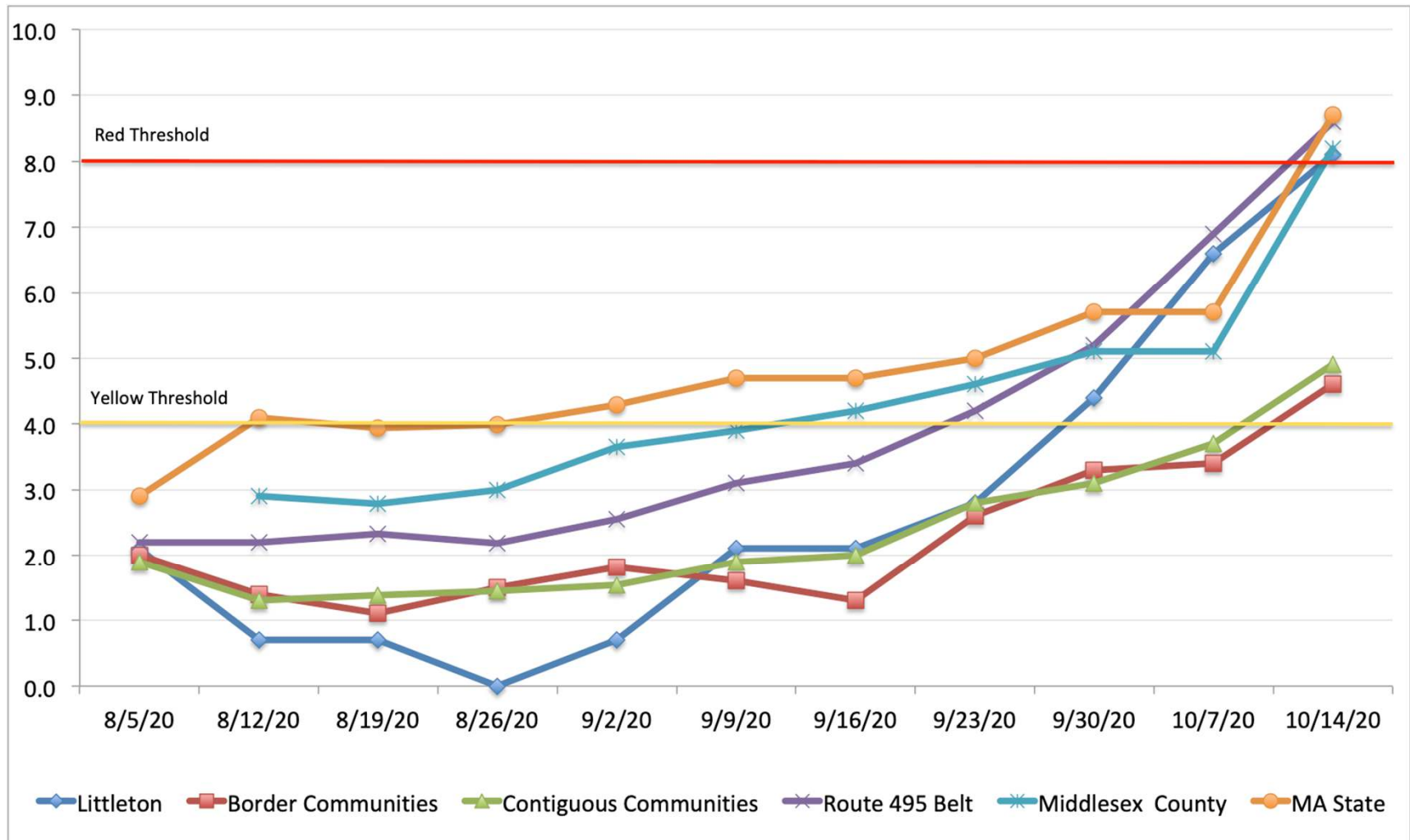
- Data sources:
 - Weekly COVID-19 Public Health Report:
<https://www.mass.gov/info-details/covid-19-response-reporting>
 - Where <5 cases, used rate of average daily cases per 100k population reported by DPH to estimate number of cases in that town
 - Population data from UMass Donahue Institute (2019)
- Calculation
 - $((\text{number of cases diagnosed in last 14 days} / 14 \text{ days}) / \text{population}) * 100,000$

Average Daily Cases

	Average Daily Cases per 100,000 (past 14 days)	Trend (2 weeks)	DESE Threshold
Littleton	8.1	Higher (+3.7)	Red
Border Communities	4.6	Higher (+1.3)	Yellow
Continuous Communities	4.9	Higher (+1.8)	Yellow
Route 495 Community Belt	8.6	Higher (+3.4)	Red
Middlesex County	8.2	Higher (+3.1)	Red
MA State	8.7	Higher (+3.0)	Red

Data from October 14, 2020 MA weekly DPH report

Trend: Average Daily Cases per 100,000



Test Positivity

- Data sources:
 - Weekly COVID-19 Public Health Report:
<https://www.mass.gov/info-details/covid-19-response-reporting>
 - Population data from UMass Donahue Institute (2019)
- Calculations
 - % Positive Tests = (Number positive tests / Total tests)
 - This includes people who are tested more than 1 time, such as surveillance testing for colleges, healthcare workers, and businesses
- Compare to <3% positive test for suppression, as recommended by Harvard Global Health Institute¹
 - Recommend <1% for maintenance

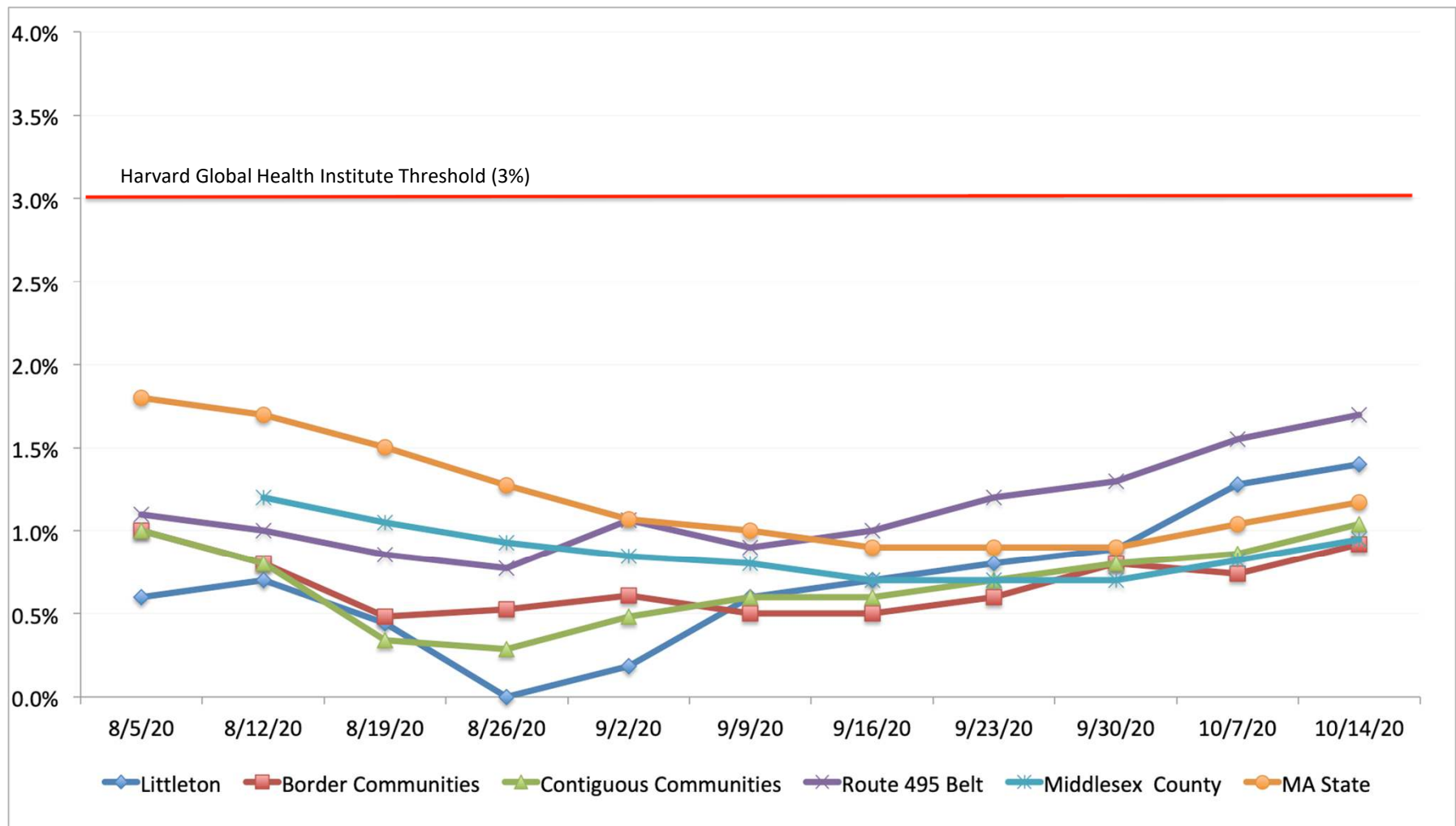
¹https://globalepidemics.org/wp-content/uploads/2020/06/key_metrics_and_indicators_v4.pdf

Percent Positivity

	Total Molecular Tests (last 14 days)	Percent Positivity	Trend (2 weeks)	3% Positivity Threshold
Littleton	784	1.44%	Higher (+0.51%)	<3%
Border Communities	6,770	0.92%	Stable (+0.16%)	<3%
Continuous Communities	16,080	1.04%	Higher (+0.26%)	<3%
Route 495 Community Belt	52,525	1.70%	Higher (+0.45%)	<3%
Middlesex County	229,676	0.95%	Higher (+0.27%)	<3%
MA State	865,003	1.17%	Higher (+0.30%)	<3%

Data from October 14, 2020 MA weekly DPH report

Trend: Test Positivity



Heath Metrics Summary

- Data as of October 14, 2020 report
- Average Daily Case Rates for our local area range from 4.6 to 8.1 per 100k
 - Littleton is **red**
 - 11 cases in the last 14 days
 - Average daily cases per 100k population = 8.1
 - Percent testing positivity in last 14 days = 1.40%
 - Rates and test positivity continue to trend higher
 - Border and Surrounding Communities are **yellow**
 - Rates (4.6 – 4.9) and testing (0.92 – 1.04%) are trending higher
- 495 Belt is **red**
 - Rates (8.6) and test positivity (1.70%) are trending higher
- Middlesex County is **red**
 - Rates (8.2) and test positivity (0.95%) are trending higher
- MA State is **red**
 - Rates (8.7) and test positivity (1.17%) are trending higher

Heath Metrics Summary

- **How do we know if we need to suspend in-person learning for our school or district?**

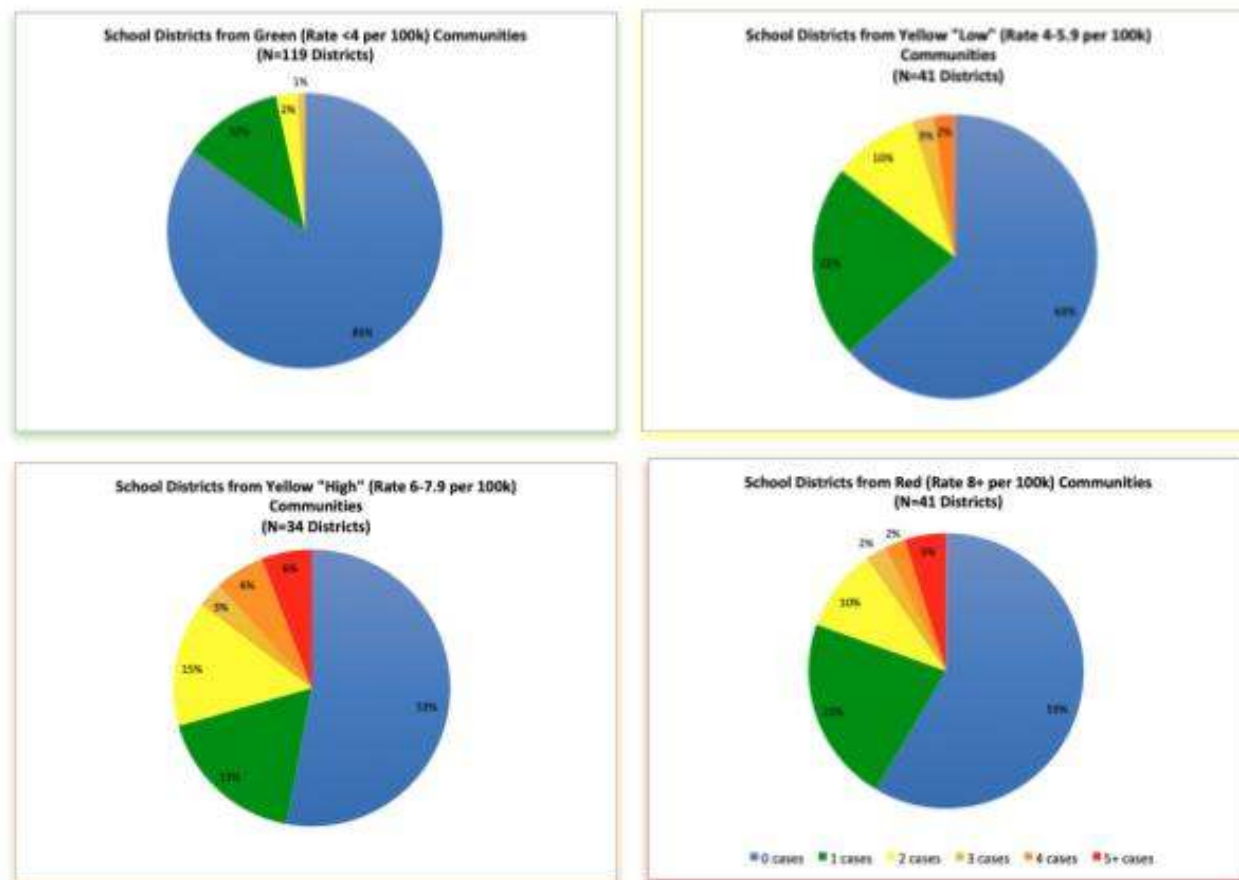
There is no one threshold or metric that indicates a school or district should suspend in-person learning.

It is important to note that these decisions need to be made based on local context, occur in collaboration with DESE and the local board of health, and may be based on the following factors:

- If the school is in a district reported as “red” on the DPH health metric for the past three weeks, and risk of transmission to students and/or staff is increased
- If test results, suggest widespread transmission is occurring
- If there are widespread absences among students and staff due to illness
- The school department and the local board of health may have other local factors that are important to consider when making this decision.

Cases in schools reflect rates of community transmission

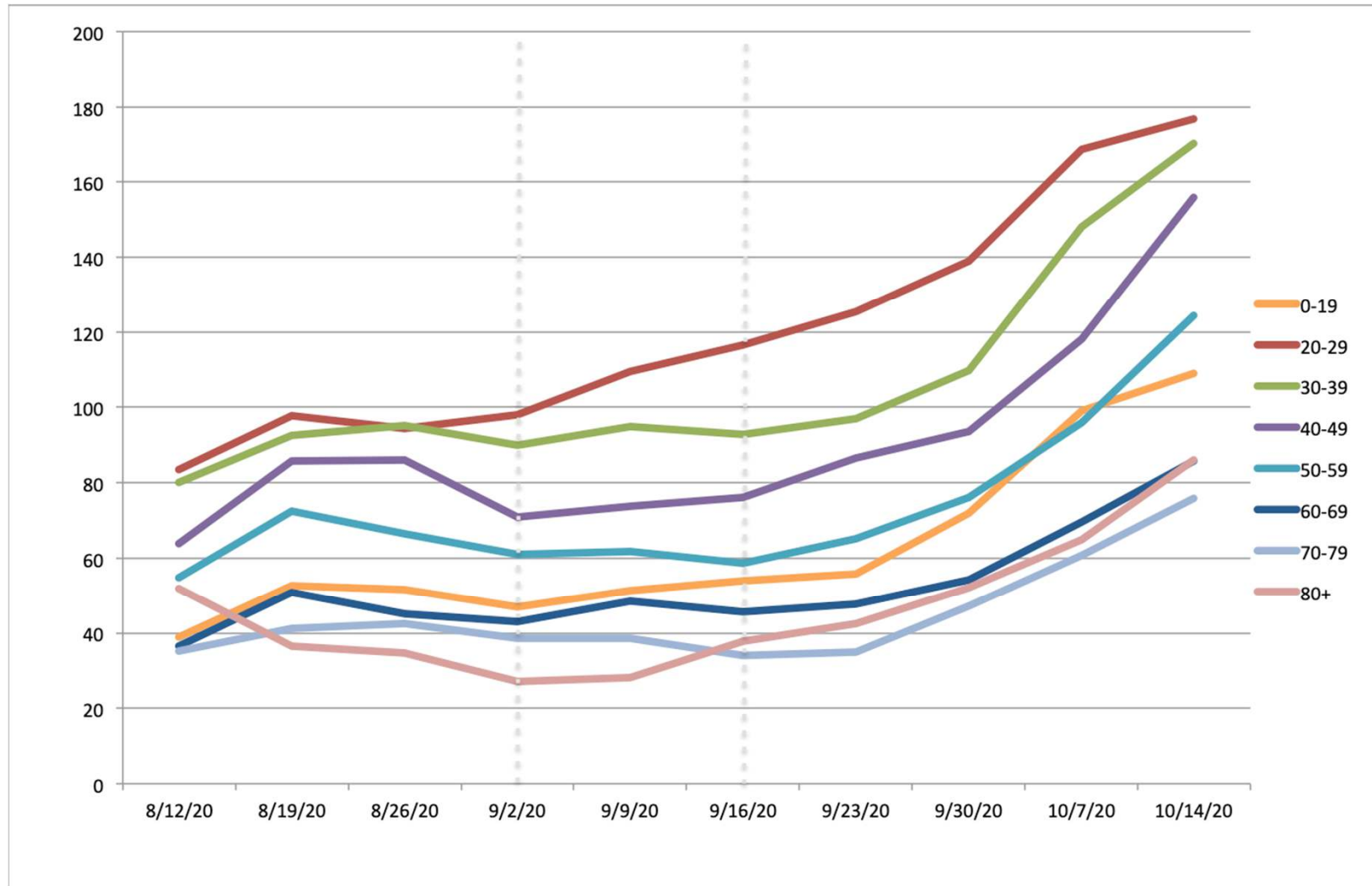
MA School Districts Reporting Covid-19 Cases (10/1-10/7)* by Community Risk Level**



Data Sources: *<http://www.doe.mass.edu/covid19/positive-cases/> **<https://www.mass.gov/doc/weekly-covid-19-public-health-report-october-7-2020/download>
Not Shown: Schools where Community Risk Level is unknown (e.g. multi-town districts, charter, tech) (N=165)

Case Rate By Age:

Rate per 100k for Two Weeks

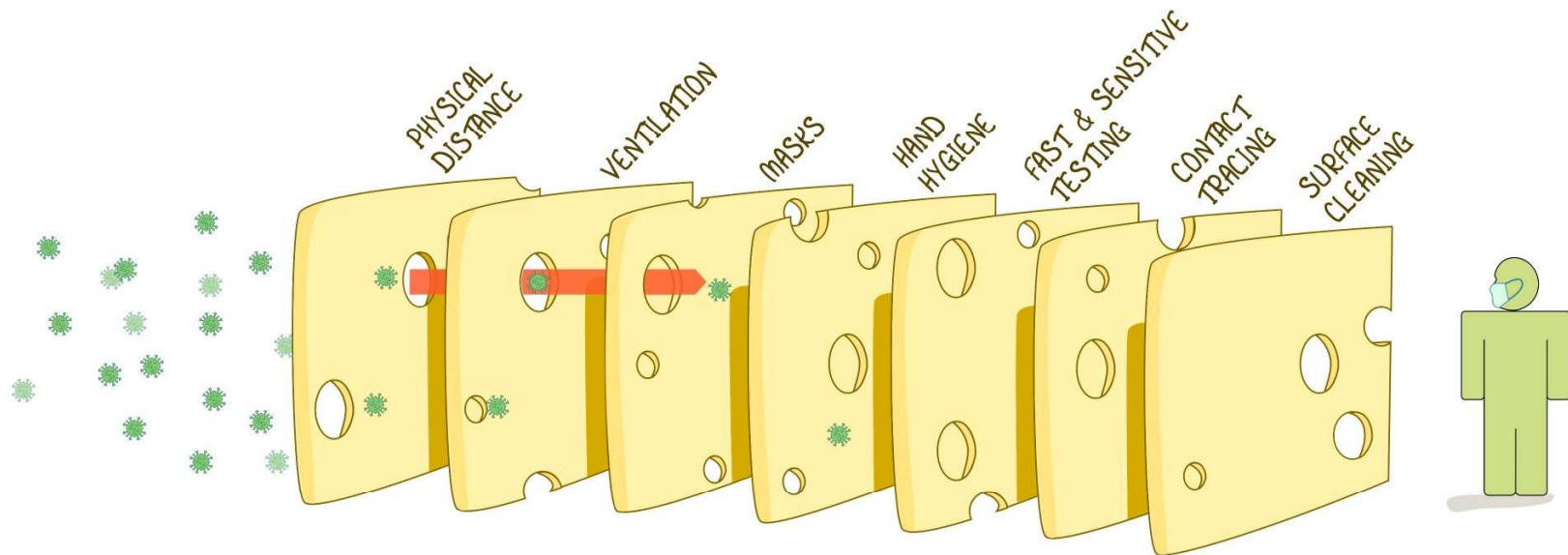


Case Rate by Age Group

- Rates are trending higher in **all** age groups
 - Highest for 20-29, 30-39, 40-49, 50-59
 - 0-19 age bracket is wide and likely hides differences within that group
- Rising trends related to increased mobility and mixing following opening of colleges, schools, and relaxation of State reopening guidelines
- These age group trends are consistent with current State contact tracing data suggesting transmission is occurring at:
 - unmasked social gatherings
 - pre/asymptomatic household spread

THE SWISS CHEESE RESPIRATORY VIRUS DEFENCE

RECOGNISING THAT NO SINGLE INTERVENTION IS PERFECT AT PREVENTING SPREAD



EACH INTERVENTION (LAYER) HAS IMPERFECTIONS (HOLES).
MULTIPLE LAYERS IMPROVE SUCCESS.

IAN M MACKAY
VIOLOGYDOWNUNDER.COM
DERIVED FROM @SKETCHPLANATOR
BASED ON THE SWISS CHEESE MODEL OF ACCIDENT CAUSATION, BY JAMES T REASON, 1990
VERSION 1.3
UPDATE: 12OCT2020

Important to use as many of these layers of protection as possible, even at home

- Wear a mask when with friends/family outside your household
- Meet outside
- Avoid large groups